

The K/Series gas/oil combination burner is a forced draft packaged burner system. A backward curved impeller mounted in a manufactured housing provides combustion air for various furnace pressures or high altitude applications. The KLG combination gas/oil burners change from one fuel to the other by simply flipping a switch. No burner modifications or re-adjustments are required when changing from one fuel to the other.

The K/Series is listed by Underwriters Laboratory. CSD-1, Gap, F.M., NFPA-85 and other regulatory agency control options are available. Every burner is assembled, wired and tested at the factory.

STANDARD EQUIPMENT

- ▶ 3450 RPM Blower Motor
- ▶ Panel Signal Lights: Power On, Main Fuel, Ignition, and Flame Failure
- ▶ Fuel Changeover Switch
- ▶ Combustion Air Proving Switch
- ▶ Ignition Transformer
- ▶ 120/1/60 Control Circuit
- ▶ Safety Shutoff Valve(s) with 2 Gas Shutoff Cocks
- ▶ Gas-Electric Interrupted Pilot



OPTIONAL FEATURES

S = STANDARD
 O = OPTIONAL
 N/A = NOT AVAILABLE

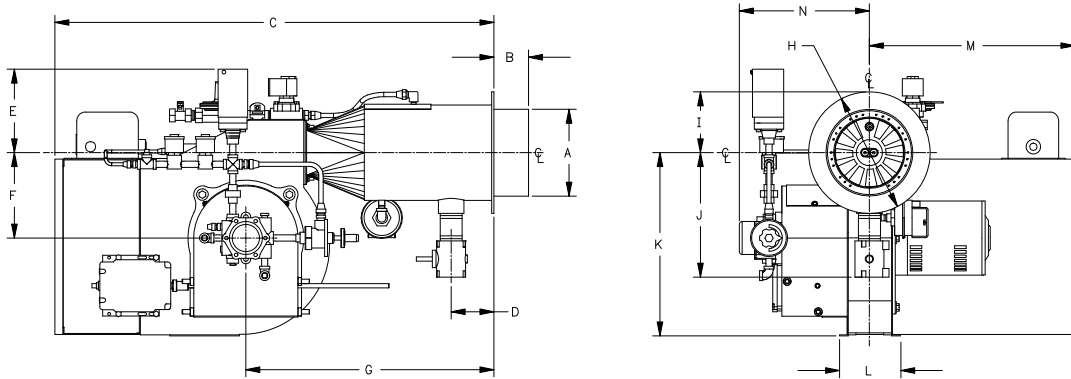
	KLG-13				KLG-54	KLG-105
	KLG-17			KLG-34	KLG-63	KLG-125
	KLG-21	KLG-25	KLG-30	KLG-42	KLG-84	KLG-145
Flame Safeguard with U.V. Scanner	S	S	S	S	S	S
Low-High-Off Firing	S	S	S	S	N/A	N/A
Low-High-Low Firing	O	O	O	O	N/A	N/A
Full Modulation Firing	O	O	O	O	S	S
Directly Driven Oil Pump Set	S	S	S	S	N/A	N/A
Separately Driven Remote Oil Pump Set	O	O	O	O	S	S
Butterfly Rate Control Valve	S	S	S	S	S	S
High & Low Gas Pressure Interlocks	O	S	S	S	S	S
Simplex Oil Nozzle	S	S	S	S	S	N/A
Return Flow Oil Nozzle	N/A	N/A	¹ O	¹ O	O	S

¹ Standard if Full Modulation is chosen.

SPECIFICATIONS & DIMENSIONS

BURNER MODEL	FRAME SIZE	GAS INPUT (MBH)	OIL INPUT (GPH)	FURN. PRESS. ("W.C.)	BHP @ 80% EFF.	MOTOR HP ¹	MOTOR HP ²	REMOTE OIL PUMP MOTOR HP ³	BLOWER MOTOR VOLT/PH 60 HZ.	GAS PRESSURE REQUIRED ("W.C.)
KLG-13	1	1,250	8.9	0.75	30	1/2	1/2	1/3	115/1	3.9
KLG-17	1	1,750	12.5	0.75	40	1/2	1/2	1/3	115/1	6.6
KLG-21	1	2,093	14.9	0.75	50	3/4	3/4	1/3	115/1	10.1
KLG-25	1	2,510	17.9	0.75	60	3/4	3/4	1/3	115/1	14.3
KLG-30	2	2,930	20.9	1.5	70	3/4	3/4	1/3	115/1	13.1
KLG-34	2	3,348	23.9	1.5	80	1	1	1/2	115/1	16.9
KLG-42	2	4,185	29.9	1.5	100	2	2	1/2	208/230/460/3	12.9
KLG-54	3	5,231	37.4	3.0	125	2	-	3/4	208/230/460/3	12.5
KLG-63	3	6,278	44.8	3.0	150	3	-	3/4	208/230/460/3	17.1
KLG-84	3	8,370	59.8	3.0	200	7 1/2	-	1	208/230/460/3	19.1
KLG-105	4	10,460	74.7	4.0	250	5	-	1 1/2	208/230/460/3	19.8
KLG-125	4	12,560	89.7	4.0	300	7 1/2	-	1 1/2	208/230/460/3	31.6
KLG-145	4	14,650	105.0	4.0	350	10	-	1 1/2	208/230/460/3	42.2

- NOTES:**
- Gas input based on natural gas at 1,000 Btu/cu.ft. and 0.60 gravity.
 - Gas pressure based on zero furnace pressure. For total pressure at manifold, add furnace pressure.
 - Oil input based on No. 2 oil at 140,000 Btu/gal.
 - Boiler overall efficiency of 80% estimated.
 - Blower wheel and motor HP is based on altitude up to 2,000 ft. above sea level. For higher altitude or 50 Hz. applications, consult factory.
 - Firing at higher furnace pressures de-rates the burner by approximately 5% per 1/2" of additional pressure, consult factory.
- MOTOR SELECTIONS:**
- Motor ratings for gas only and remote oil pump burners.
 - Motor ratings for direct drive oil pump burners.
 - Remote oil pump is optional for all frame size 1-2. For frame size 3-4, a remote oil pump is standard.



STANDARD CONFIGURATION

BURNER MODEL	A	B Std.	C	D	E	F	G	H	I	J	K	L	M	N
KLG-13	7 1/2	3	37 7/8	3 5/8	7 1/4	7 3/8	21 3/8	10 1/2	5 1/4	10 3/4	15 7/8	5 1/4	18	11 1/4
KLG-17	7 1/2	3	37 7/8	3 5/8	7 1/4	7 3/8	21 3/8	10 1/2	5 1/4	10 3/4	15 7/8	5 1/4	18	11 1/4
KLG-21	7 1/2	3	37 7/8	3 5/8	7 1/4	7 3/8	21 3/8	10 1/2	5 1/4	10 3/4	15 7/8	5 1/4	18	11 1/4
KLG-25	7 1/2	3	37 7/8	3 5/8	7 1/4	7 3/8	21 3/8	10 1/2	5 1/4	10 3/4	15 7/8	5 1/4	18	11 1/4
KLG-30	9 1/4	4	41 7/8	4	7 1/8	8 7/8	23 3/8	12	6	11 3/8	19	6 1/2	17 3/8	12 7/8
KLG-34	9 1/4	4	41 7/8	4	7 1/8	8 7/8	23 3/8	12	6	11 3/8	19	6 1/2	17 3/8	12 7/8
KLG-42	9 1/4	4	41 7/8	4	7 1/8	8 7/8	23 3/8	12	6	11 3/8	19	6 1/2	17 3/8	12 7/8
KLG-54	10 3/4	4	48 3/4	3 3/4	7 3/4	10 7/8	27 5/8	14 1/2	7 1/4	12 7/8	23 1/2	8	16 3/8	16 1/4
KLG-63	10 3/4	4	48 3/4	3 3/4	7 3/4	10 7/8	27 5/8	14 1/2	7 1/4	12 7/8	23 1/2	8	16 3/8	16 1/4
KLG-84	10 3/4	4	48 3/4	3 3/4	7 3/4	10 7/8	27 5/8	14 1/2	7 1/4	12 7/8	23 1/2	8	16 3/8	16 1/4
KLG-105	12 1/8	5	56 3/8	3 7/8	8 3/4	12 1/2	32 7/8	17 1/2	8 3/4	15	27 1/8	10	17 3/8	20
KLG-125	12 1/8	5	56 3/8	3 7/8	8 3/4	12 1/2	32 7/8	17 1/2	8 3/4	15	27 1/8	10	17 3/8	20
KLG-145	12 1/8	5	56 3/8	3 7/8	8 3/4	12 1/2	32 7/8	17 1/2	8 3/4	15	27 1/8	10	17 3/8	20